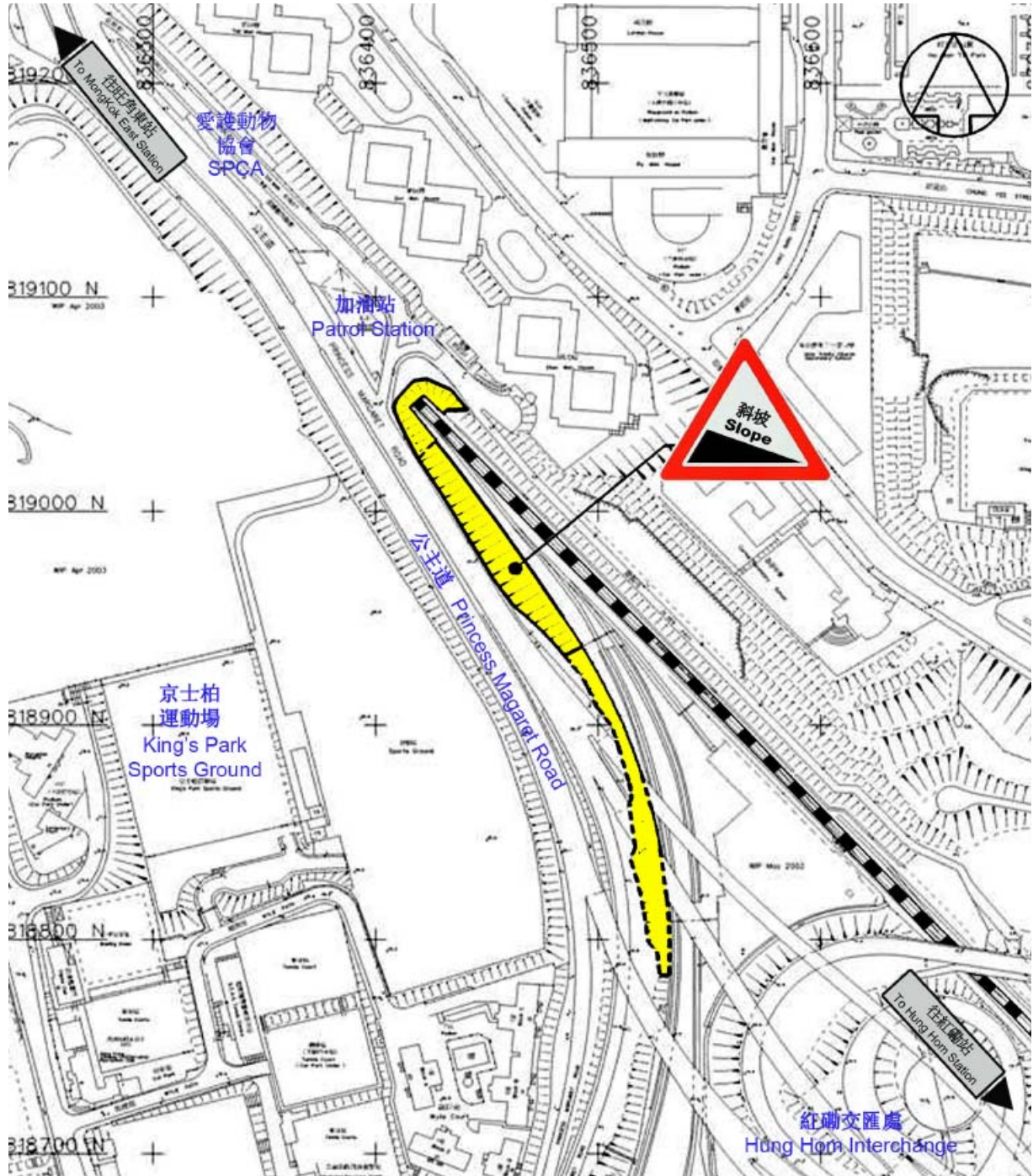


第二期東鐵綫斜坡改善工程
East Rail Line Slope Improvement Works - Phase II

改善工程位置:	紅磡站及旺角東站之間 (近公主道加油站)
Location of Improvement Works:	Between Hung Hum Station and Mong Kok East Station (Near Princess Margaret Road Petrol Station)

位置圖 Location Map



第二期東鐵綫斜坡改善工程
East Rail Line Slope Improvement Works - Phase II

改善前 Before Improvement



改善後 After Improvement

